



The Charolais Pavilion,
Avenue M,
Stoneleigh Park, Kenilworth,
Warwickshire, CV8 2RG
t: 024 76 697731
f: 024 76 697776
www.rugbyfarmersmart.com
Holding No. 43-139-8013

Office Hours: Monday to Friday – 9.00am to 5.00pm
Opening Time: Gates open at 5.30am until further notice

Market Reports For Monday 13th January 2020

Market At A Glance

Prime Steers to 237p/kg & £1692
Prime Heifers to 246p/kg & £1666
Prime Bulls to 178p/kg & £1223
OTM Cattle to 139p/kg & £1021
Prime Hogg SQQ 215.5p/kg (2263)
Prime Hogs to 279p/kg & £130
Ewes to £153 (933 Avg £95)
Store Lambs to £85.50 (274)
Calves to £280

Monday 20th January
Sale of Store Cattle 1pm

Monday 3rd February
Sale of Store Cattle

Catalogues & Entry Forms available by post, email or on the website
www.rugbyfarmersmart.com ~ admin@rugbyfarmersmart.com

CATTLE: 91 Forward

In Rugby Auction Mart on Monday 13th January at 10am

The sale commenced at 9:45am prompt and will do for the foreseeable, this has many advantages regarding the values, transportation, the welfare of the cattle, the logistics within the mart and the running of the sale not to mention the rest of the day is yours once the sale concluded at 10.56am!!! Please do get in contact should you have any questions or require an on farm visit, I, Andy Armstrong have many abattoirs looking to Rugby Mart to purchase all prime clean cattle, prime bulls, cast cows and stock bulls. I am needing more numbers in order to attract the purchasers. If you have prime cattle and are sitting back watching waiting to see the rise in numbers, please press forward, call me and present cattle in Rugby, were there are over 30 active prime cattle and Fat cattle accounts creating demand and a true and fair price, be part of the rise of the prime and cast sections. Liveweight cattle sales play a huge important part of the values within the industry, the independent abattoirs support the auction system, without these independents there is no competition for the larger predominantly deadweight processors. !!!sell live and thrive!!!!

There was a show presented for sale of 65 Prime Cattle consisting of 35 Heifers, 15 Steers, 5 Prime Bull & 10 Cast Cattle.

The prime sale was buoyant with all vendors delighted at the values they received. All buyers at ringside bid keenly and freely challenging one another to purchase their required goods. A new abattoir was present and was represented by the firm owner. Great to see the another end user using Rugby mart. Weekly through the live sale Rugby mart over 200 cattle could be sold confidently auctioned.

Top price per kilo clean beast was 246p for a Home Bred British Blue Heifer that realised £1444 consigned by Messers Page Bros, Lodge Farm purchased by Mr Andrew Mutch of MutchMeats. Lead grossing heifer realised £1666 for a 36 month old Limousin it was consigned by Messers Page Bros Lodge Farm purchased by Mr M Etherington on behalf of Hartshead Meats Ashton Under Lyne. Lead grossing steer realised £1692 for a home bred British Blue consigned by Messers Page Lodge purchased by Mr Andrew Mutch of Mutch Meats

Cast Cows were met with plenty of demand and sold to 139p consigned by C Stubbs The Closes purchased by Andrew Mutch of Mutch Meats. Top Cow gross £1021 from A Wilson. Many many more cows can be sold. All classes of cast dairy cows are catered for from a P1 to a U+5 cow. Please do call to see what we can achieve in price. You may be presently surprised, weekly more Rugby Mart farmers are!!!

Should you be under TB restriction please do call, we are now looking to market your prime cattle and cast cows on a deadweight service. There is no class of beef animal we cannot market live or dead.

Please call Andy Armstrong on 07902 316268 I am within the Midlands from a Monday to a Wednesday, I am on the mobile 24/7. Looking forward to speaking and visiting you soon.

Auctioneer: Andrew Armstrong

Timing - We now aim to give each area its own backing and so confirm going forward Prime Cattle 9:45am, Calves 10am and Lambs 10:15am

STEERS & BULLS:			
Top prices per head			
British Blue x	714kg	£1692	Page Bros
Hereford	704kg	£1295	J A & S Wrench
British Blue x	539kg	£1277	C W Thomas
Simmental	687kg	£1223	C H Evans & Son
British Blue	748kg	£1212	Showell Farms
Top prices per kilo			
British Blue	539kg	237ppk	C W Thomas
British Blue	714kg	237ppk	Page Bros
Aberdeen Angus	527kg	196ppk	R J Wright
Aberdeen Angus	587kg	190ppk	R J Wright
Limousin x	596kg	190ppk	R W Cross & Partners

HEIFERS:			
Top prices per Head			
Limousin x	709kg	£1666	Page Bros
British Blue	587kg	£1444	Page Bros
Limousin x	630kg	£1386	C W Reay & Son
Blonde	603kg	£1381	GR Fountaine
Limousin x	670kg	£1340	C W Reay & Son

Top prices per Kilo			
British Blue	587kg	246ppk	Page Bros
Limousin x	526kg	241ppk	C W Thomas
Limousin x	521kg	241ppk	Page Bros
Limousin x	523kg	239ppk	Page Bros
Limousin	534kg	239ppk	DTP & PA Walters

**Please could all vendors book in stock, either by a quick call,
text or email Thank You!**

Office: 02476697731

Email: admin@rugbyfarmersmart.com

Tom: 07774723758

Commission

Recent reviews of our cost and services have required we alter our commissions to 3%. We remain competitive with a Max top of £35 and min of £28 to ensure our customers are charged a rate appropriate.

CALVES: 31 Forward

A break in calving blocks and a slight steady in supply meant nowhere near enough calves forward for the buying power present.

Best end Continental Bulls flying with a top of £270 to new vendor SJ & LA Kirk for Blues. Best Heifers to £248 for Limousin x from Mark and Jenny Titterton.

No numbers of Natives forward however a top today of £235 for Angus x Bulls from Pete Hemmings.

A handful of older stirks forward today selling to £490 for Blue Bulls from HH Corbett & Son.

More Calves are expected and needed next sale (Monday 27th). Please call to book Calves in.

Auctioneer: Martin Lloyd

Store Lambs: 274 Forward

When you thought they couldn't get any dearer... they do. If you have stores left to sell now is the time to take advantage of this trade. No end of pens over £75 with very very few sheep sold under £60. Top today £85.50 for Texels from AO Wootton & Co, with Roy Batchelor selling Continentals to £85. Short term lambs £80 Plus, with mid-term better sorts £75-£80. Longer term sorts £65-£72 and these looking very dear.

Auctioneer: Martin Lloyd

SHEEP:3475

Prime Hogs: 2268 Forward SQQ 215.5p/kg

Trade seemed to be cooling at the end of the week but merely a fall in Numbers Nationally has acted to give a new buoyancy to the job. An SQQ of 215.5p/kg representing a return simply unachievable on any deadweight. Lambs a mixed bag today but a yarding just shy of 2300 catered for all. Two new buyers in the aisles today an indication of the draw of a market with numbers. Today 14 buyers at ringside all with end user accounts. Trade today swift for all goods but best end Export lambs incredibly hotly contested. In the Euro section a top of 274p/kg for 36.5kg Beltex from Messrs Roots, Southam ahead of G L Woodard, Banbury at 271p/kg for 38kg. Beltex from Matt and Claire Morris saw 40kg at 268p/kg whilst Messrs Claridge, Buckingham 40kg to 265p/kg. In the heavies a top of 250p/kg for 48kg from Matt and Claire Morris with Beltex. Heavies from V J Roots 53kg to 245p/kg and Roser maria Leach 51kg at 225p/kg. In the lump Lambs suitable for Export and Deadweight topped at £113 from M & C Morris, Leicestershire with 45kg Beltex. Frank Hodgkin, Swinford sold 43kg to £111 and J Meadows, Stratford Upon Avon saw 45kg at £108.50. Heavies a surprisingly strong trade with Wholesale Markets pushed along by the current buoyant Ewe Meat trade. Top £130 for 53kg from V J Roots whilst a monster of 80kg from A C Cook, Bristol took £124 and Jack Lombard, Banbury £121 ahead of Messrs Cook again at 66kg to £120. The total consignment of 141 from Messrs Cook Bristol saw belly clipped lambs to avg £111. Trade really continues to favour producers and should be taken advantage of.

Auctioneer: Tom Wrench

Goats

20 well reared Togenberg 3 month old goats from Messrs Peebles today 30 to 31kg 270 to 279p/kg

Auctioneer: Tom Wrench

Prime Hogs : under 45.5kg SQQ 215.5p/kg			
Per Kilo			
Goats	30.50kg	279ppk	M C & M Peebles Farm Services
Beltex	36.50kg	274ppk	V J Roots
Texel x	38.00kg	271ppk	G L Woodward
Goats	31.50kg	270ppk	M C & M Peebles Farm Services
Texel x	40.00kg	268ppk	M & C Morris

Per HEAD			
Texel x	45.00kg	£113.00	M & C Morris
Beltex x	43.00kg	£111.00	F Hodgkin
Charollais x	45.00kg	£108.50	J Meadows
Beltex x	41.00kg	£108.00	OJ & MJ Guest
Texel x	40.00kg	£179.00	M & C Morris

Hoggs: OVER 45.5kg			
Per kilo			
Texel x	48.00kg	250ppk	M & C Morris
Beltex x	53.00kg	245ppk	V J Roots
Texel x	51.00kg	225ppk	R Leach
Texel x	49.00kg	224ppk	E A Hull
Beltex x	46.00kg	217ppk	J K Smith & Sons

Per HEAD			
Beltex	53.00kg	£130.00	V J Roots
Charollais x	80.00kg	£124.00	A C Cook
Charollais x	67.50kg	£121.00	J D Lombard
Charollais x	66.50kg	£120.00	A C Cook
Texel x	48.00kg	£120.00	M & C Morris

Cull Ewes: 933 Forward

IF ANYTHING DEARER THAN LAST WEEK. With an Avg of nearly £100 for the yarding just shy of 1000, a real trade. Not the best yarding of quality by any means but a lack of numbers Nationally dictating the pace and buyers having to give unprecedented rates for Ewe meat. No real show stopping Ewes today but meat and shape rewarded throughout with only Fat at a disadvantage. Top today £153 from Park End Farming with Texels whilst OJ & MJ Guest, Market Bosworth to £151 and Bradley Wrench, Shipston on Stour to £147. Rams from Ben Nichols to £146. Plenty of Texels over the £140 mark. Top Suffolks to £140 from WSE & CA Moreby with pen full of 17 from the same to £134. In General Suffolks £105 to £130 and Mules topping at £121 from D W Guerney, Winslow. Mules generally £90 to £100. Trade simply unbelievable and unsustainable without a massive increase in the price of your Saturday night Curry and Kebab come this weekend.

Auctioneer: Tom Wrench

Texel x	£153	Park End Farming	Texel x	£141	S Oakes & Son
Texel x	£151	OJ & MJ Guest	Texel x	£140	Midland Environmental Services
Texel x	£147	W B Wrench	Suffolk x	£140	WSE & CA Moreby
Texel x	£146	B Nichols	Texel x	£140	S Oakes & Son
Texel x	£144	D W Gurney & Son	Texel x	£140	R F Staveley Ltd

Reminder for Cull Ewe Vendors

Please ensure Ewes are NOT in-Lamb before bring them into the market.

PROJECT – Pick-up owners, Stoneleigh Park, CV8 2LZ, 24th-26th Jan, 3hrs £200

We have a research in Stoneleigh Park from Fri 24th – Sun 26th Jan for people with Pick-up vehicles, it will last 3hrs and you will be paid £200 cash to take part. You may also be asked to return for another 90min interview and will be paid a further £100. To take part you must own a Fiat Fullback, Ford Ranger, Isuzu Dmax, Mercedes X-Class, Mitsubishi L200, Nissan Navara, Toyota Hilux or VW Amarok registered 2015 or newer. If you would like to take part please complete your details using this link <https://forms.gle/DJLk6Cjb6BJRzKaN7> or call Emma on 07779 300462

Hazel Hedge laying Stakes and Binders £13.00 per score plus VAT.

Tel. John Dawson on 07884 490439.

Sheep Grazing Wanted

Please contact Stuart Wise 07880742082 or Lesley 07564645504

**Agricultural Services available including Muck Spreading,
Ploughing, Cultivation and much more!**

Call Will for more info: 07795632527

Always Happy To Help!

Hy-line pullets point of lay available now brown egg layers.

Please contact Mark Martin on 07976 260 775 or 01788 565766



**SHELDON
BOSLEY
KNIGHT**

RURAL

RFM ARE NOW PROUDLY SUPPORTED BY SHELDON BOSLEY KNIGHT

Have you got your greening
and crop diversification
worked out ready for BPS?

Do you have a redundant
farm building which could
have potential for class Q
development?

Have you thought about
entering in to a Countryside
Stewardship Grant?

Do you have a diversification
project in mind which could be
eligible for the RDPE Growth
Programme grant of 40% of
eligible costs with a minimum
grant of £20,000?

RFM's Sophie Mockler who you will have seen weekly at the market, now also works for Sheldon Bosley Knight as a Rural Surveyor alongside John Sawdon who you may also have seen hanging around the sheep and cattle aisles in the past few weeks. Sheldon Bosley knight are now proud supporters of the Market and are working closely to offer first class professional services to all who attend.

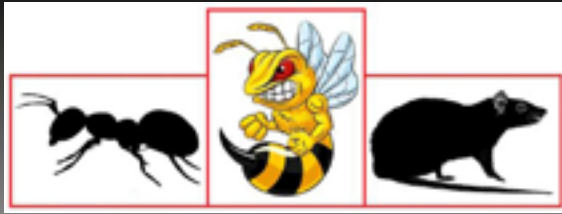


Next week John Sawdon will be in the Market Café to offer treats and a chat providing the perfect opportunity to get to know the services SBK can offer you, he'll be there around 11:30am.

You can also contact the rural team on **01789 387881** and email: **rural@sheldonbosleyknight.co.uk** or Sophie on her mobile **07538 439493**.

**LAND AND PROPERTY
PROFESSIONALS WITH ACRES
OF RURAL KNOWLEDGE**

sheldonbosleyknight.co.uk



RDB Pest Control

Reliable | Trustworthy | Fast | Effective
Competitive Prices

Ryan Brunt

07922 091 459

rdbpestcontrol@outlook.com

Why You Should Choose Us

- ✓ Cater for Red Tractor and Farm Assurance Schemes
- ✓ Wide ranging experience on Farms with existing agricultural customers
- ✓ Member of Warwickshire Young Farmers
- ✓ Fully qualified - Level 2 RSPH in Pest Control
- ✓ Trustworthy and security vetted
- ✓ Prompt, reliable fast response

A selection of sites where I have experience:

Police Sites • Local Airport • Farms • Warehouses • Offices
• Industrial Estates • Food Premises • Private Houses
Country Estates • Building Sites • Local Councils • Schools •
Day Nurseries • Care Homes

Call Tom on 07807 693858, 01926 814731
or email to tom.reeve@aol.co.uk

Tom Reeve Contracting

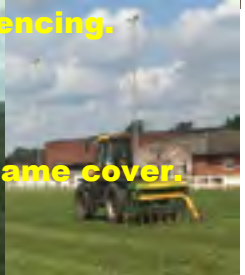
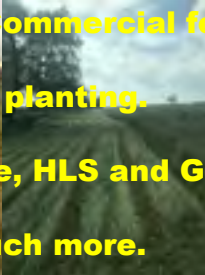
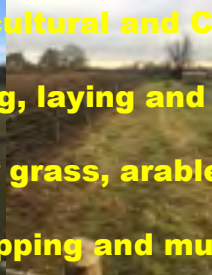


Domestic, Agricultural and Commercial fencing,

Hedge coppicing, laying and planting.

Slot seeding for grass, arable, HLS and Game cover.

Slitting, Flail topping and much more.



FINISHING CATTLE?

GROWING CATTLE?

FEEDING SHEEP?

DO YOU WANT

HIGH PERFORMANCE

COST EFFECTIVE

FULLY ASSURED

AND

COMPLETE FEEDS?

THEN CONTACT

BERRYSTOCK FEEDS

TEL: 01788 890320

E-MAIL: john@berryfieldsfarm.co.uk

www.berrystockfeeds.co.uk

BERRYFIELDS FARM

DAVENTRY

NN11 8NP

For Sale

Good round bale haylage
Call Jane 07754488292

Wanted

Full-time worker required for sheep and cattle farm also some tractor work.
Good rate of pay for a reliable, experienced person.
Stratford Upon Avon area.
Call Steve on 07771560251

Hedge Cutting Contracting Service
Call Tom Lambert on 07824489716

For Sale

2 Pedigree Aberdeen Angus Stock Bulls
only selling as back on daughters
Call 07774723758

Wanted

Sheep & Cattle Grazing
Call 07760266701

Farm Insurance Specialists

Call 01865 844994

Visit www.county-insurance.co.uk



County
Insurance
Services

County Insurance Services, County House, Grove Court, Leamington Spa, Warwick, CV32 3JG. County Insurance Services is authorised and regulated by the Financial Conduct Authority, a FCA 50727.

JMT ENGINEERING REQUIRE CLASS 1 & 2 Lorry drivers.
Please ring Mark on 07970382951 or 01926 614345 for details"

T.A.R HIRE

- **FOR HIRE:**
- **10 & 14 TON REAR MUCK SPREADERS**
- **12 TON TRAILERS WITH SILAGE SIDES**
- **ROAD SWEEPER**
- **FLAT TRAILERS**
- **GRASS TOPPERS**
- **CONTRACT MUCK SPREADING SERVICES**

CONTACT:

DAVENTRY (ROB) - 07801791212

HINCKLEY (ALAN) - 07802951179



Warwickshire FCN invites you to a service of celebration and dedication
for

Plough Saturday

**on Saturday 25th. January 2020 at 3pm.
at St Mark's Church, Bilton, Rugby, CV22 7RN**

This is an opportunity to take part in a celebration of the farming year for all
those
involved in agriculture and who live in rural communities and to join
Warwickshire FCN volunteers for tea and cake after the service.

**The Reverend Canon Barbara Clutton, Agricultural Chaplain for
Warwickshire, will be officiating and
The Reverend Dr. Mark Betson, National Rural Officer for the Church of
England will give the address.**

We look forward to seeing you there

www.fcn.org

George Fell Services
Fencing & Hedge Trimming
Call 07769595856



WE COVER SMALL FARMS, LARGE FARMS AND EVERYTHING IN BETWEEN

**From sheep farmers to arable farmers.
Flower growers to poultry farmers.**

We're proud to insure over 70% of UK farms with our Farm Select insurance. But we want more farms to benefit from our great cover and local service. That's why we've introduced Farm Essentials insurance - designed to meet the needs of smaller farms.

As your local agency, we are close by and can provide expert advice and hands-on support when you need it.

Call **Coventry Office**
on **02476 444519**

NFU Mutual, 6 Eastwood Business Village,
Harry Weston Road, Binley Business Park,
Coventry, CV3 2UB



NFU Mutual
INSURANCE | PENSIONS | INVESTMENTS

Rugby Farmers Mart Ltd

Forthcoming Sales 2020

**Friday 20th January
Sale of Store Cattle**

**Monday 3rd February
Sale of Store Cattle**

Find us on Social Media



@rfm_ltd



Instagram

rugbyfarmersmartltd

Vendors who are wishing to sell stock please feel free to contact:

Tom Wrench - 07774 723758

Martin Lloyd - 07972 375351

Andrew Armstrong - 07902 316268

Steve Martin - 07960 085950

who will gladly make
A FREE ON FARM VISIT & VALUATION